

Focus On Securit And Energy-saving

Carry Brightness And Sustainable Future



Operation & Maintenance Manual

Kalcidae Series

Shenzhen KHJ Semiconductor Lighting Co., Ltd.

Address: 4-5 Floor, Building 7, HuangBeiLingJingXuan Industrial
Park, No.2 Dong Huan Rd, Yousong, Longhua Town,
Bao'an District, Shenzhen China.

Tel:86-755-33953361 Fax:86-755-28030133

Web: www.khjled.com



Kalcidae Series Index

Product introduction	①
Structure diagram	②
Usage	④
Usage caution	⑧
Maintenance caution	⑧
Maintenance parts	⑨
Failure analysis	⑨
After service	⑨

Product introduction

Dear customer, your choice for Alcidas series is highly appreciated. It is made of top famous LED source Cree/ Osram. Octagon anti-rolling structure with high-strength aluminum alloy housing, Strong impact resistance, easy operation with portable design. Electrical circuit with over charge and over discharge protection, safe and reliable

Application:

- a. Mine, petroleum and petrochemical, aircraft, military, outdoors, indoors, portable-emergency kits.
- b. Ambient temperature: -20°C to +40°C.

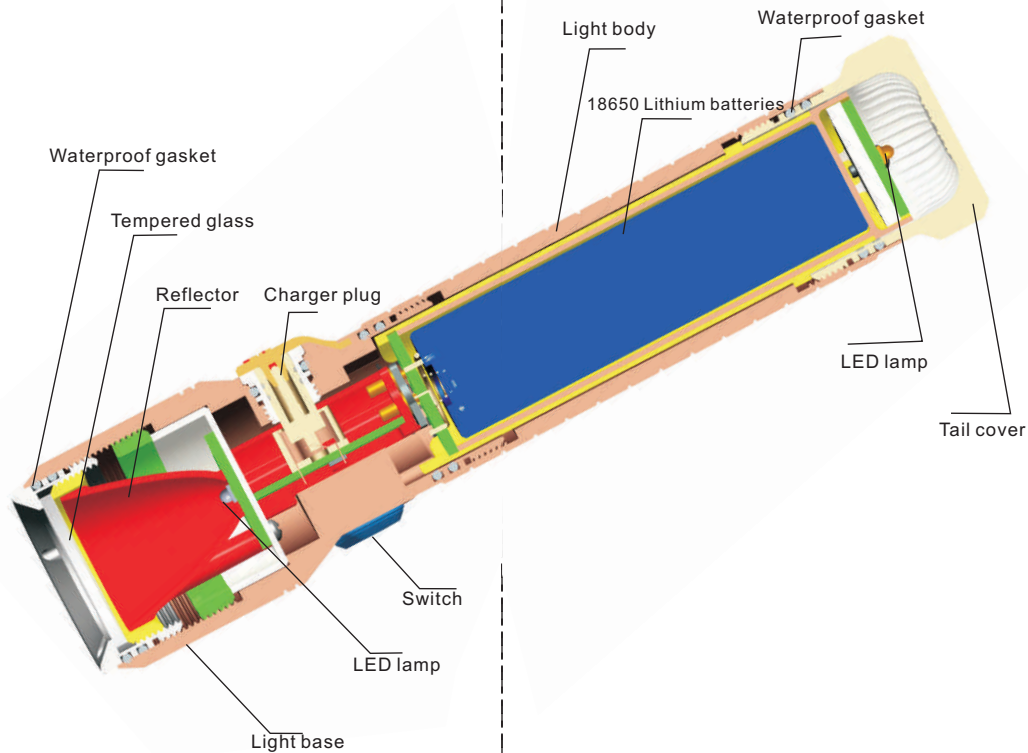
Suitable product type:

Divided in four kinds according to the candela distribution and color temperature of the tail flood light:

KACF80GWM / KACF80GCH
KACF180SWM / KACF180SCH

For a full understanding about our product, please read over our <Maintenance Instruction>

Structure diagram



②

③

Usage

The front spot lighting

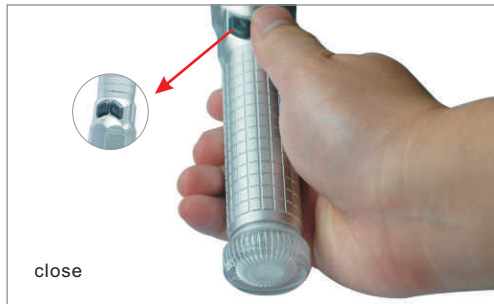


Press the button with up arrow for high output, press further for working output, press again for off. And press or click on again within three seconds for flashing light.

④

Usage

The rear flood lighting



Press the button with down arrow for power on, further for off. With rear flood lighting off, press or click on for three seconds, the times of flashing indicating the capacity of battery, five times for full.

⑤

Usage

Charging



Charger

Car charger

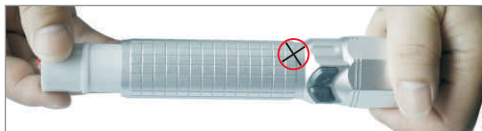


- 1.Charger with built-in intellectual protection device. The indicator lighting is green when charger power on and no loading, it is red when switch on and connected with lighting green again once the battery is full.
2. Charger with protection rubber plug, After charging, please tucked it immediately to avoid dust and other matters.
3. Suggest a full recharging and discharging cycle per half a year, if it is not used for a long time.

⑥

Usage

Replace batteries



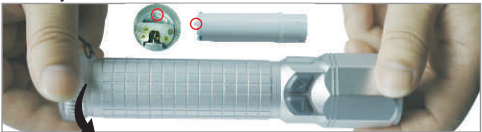
1. Loosen the tail cover, take out the battery part. Marks: tail cover must be loosened before battery part is taken out.



2. Take out the battery part, battery bracket have two parts linked by connector. Open any one of them and take out the battery.



3. Replace the battery, assemble the PCB board with spring and battery bracket firstly, and then put one side of battery into PCB board with spring tightly, after that press the battery into the battery bracket, cover the other part of battery bracket.



4. Put the battery part into the torch light, tighten up the tail cover, notice the protrude point of anti-reverse connection and the sealed gasket of the tail cover should be placed rightly.

⑦

Usage caution

Thank you very much for choosing Alcidae series LED torch light. In order to avoid the damage of your torch light and the parts, please notice the following items:



1. Torch light lack of parts to be used in dangerous place is forbidden.
2. Maintenance in dangerous place is forbidden.
3. Change the structure and spare parts at random is prohibited, changing electric circuit while maintenance is not allowed.
4. If failure occurs, the torch light should be repaired immediately. Torch light with failure to be used in dangerous places is not allowed.
5. The torch light must use our original battery.

Maintenance caution

Thank you very much for choosing Alcidae series LED torch light. In order to keep the torch in high performance please notice the following items:

- Routine maintenance Clean the torch light on regular basis.
- Notice: Do not clean with charged Advice a full recharger cycle half a year, if it is put away for a long time.
- Please clean the torch light with water when it gets dirty or corrosive liquid and then wipe it with clean soft cloth.

Maintenance parts

No.	Name	Diagram	Qty.(pcs/set)	Remark
1	PCB		2	
3	Driver		1	

Failure analysis

Problem	Analysis	Solution
Light doesn't work	Low battery	Charge the battery in safe area
	Light source damaged	Do not change the light source in dangerous area
	Driver damaged	Do not change the driver in dangerous area
Others		Contact with our service central

Service

After-sales service:

1. Installation and maintenance must be according to the instruction.
2. If customer can not deal with it by themselves, please contact with sales department.

Contact Information:

Shenzhen KHJ Semiconductor lighting Co.,Ltd

Contact Address: 4-5 Floor, Building 7, HuangBeiLingJing Xuan Industrial Park, No.2 Dong Huan Rd, Yousong, Longhua Town, Bao'an District, Shenzhen China.
Tel: 86-755-33953361
Fax: 86-755-28030133
Web: www.khjled.com